

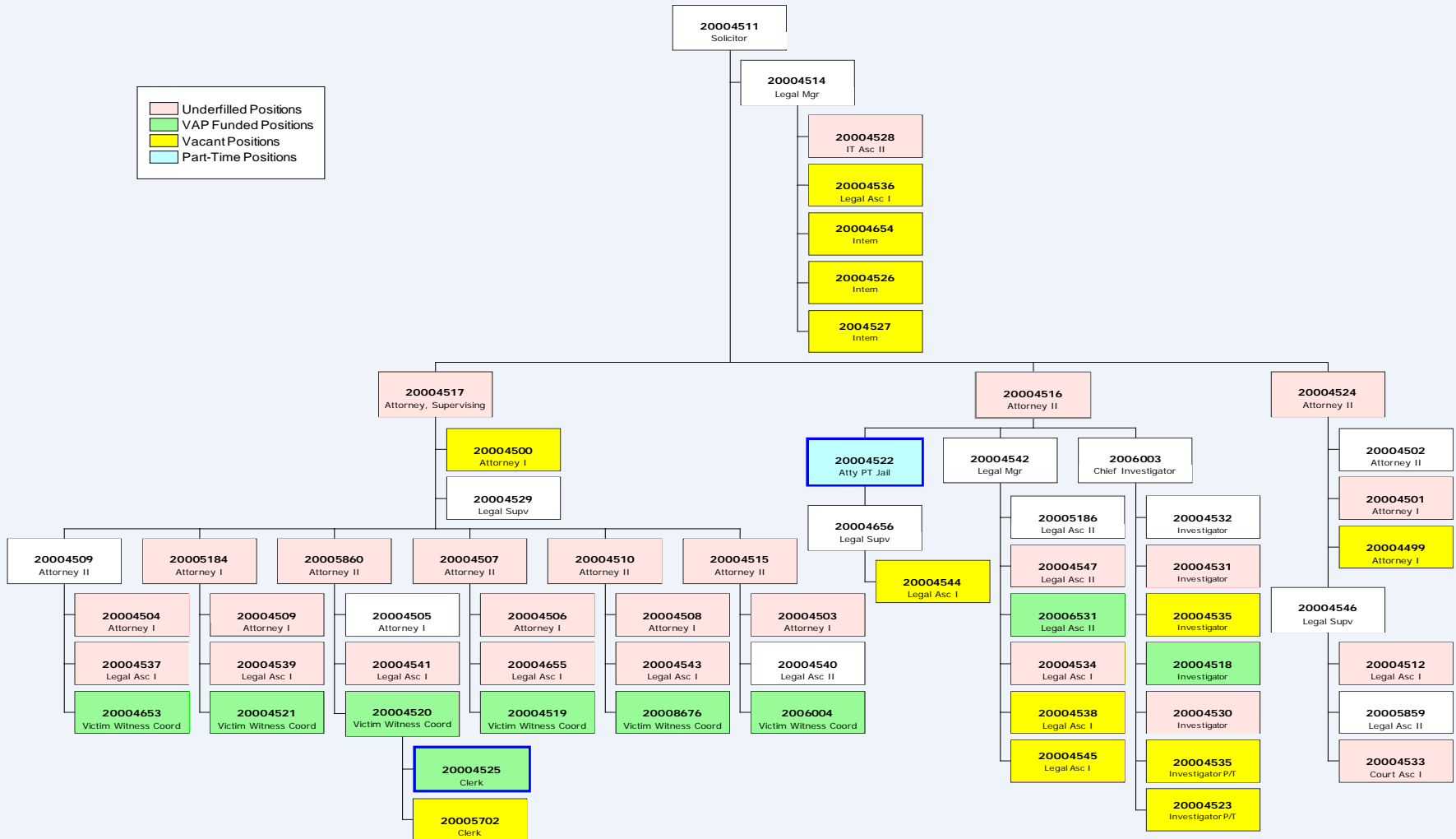


Gwinnett County Solicitor's Office

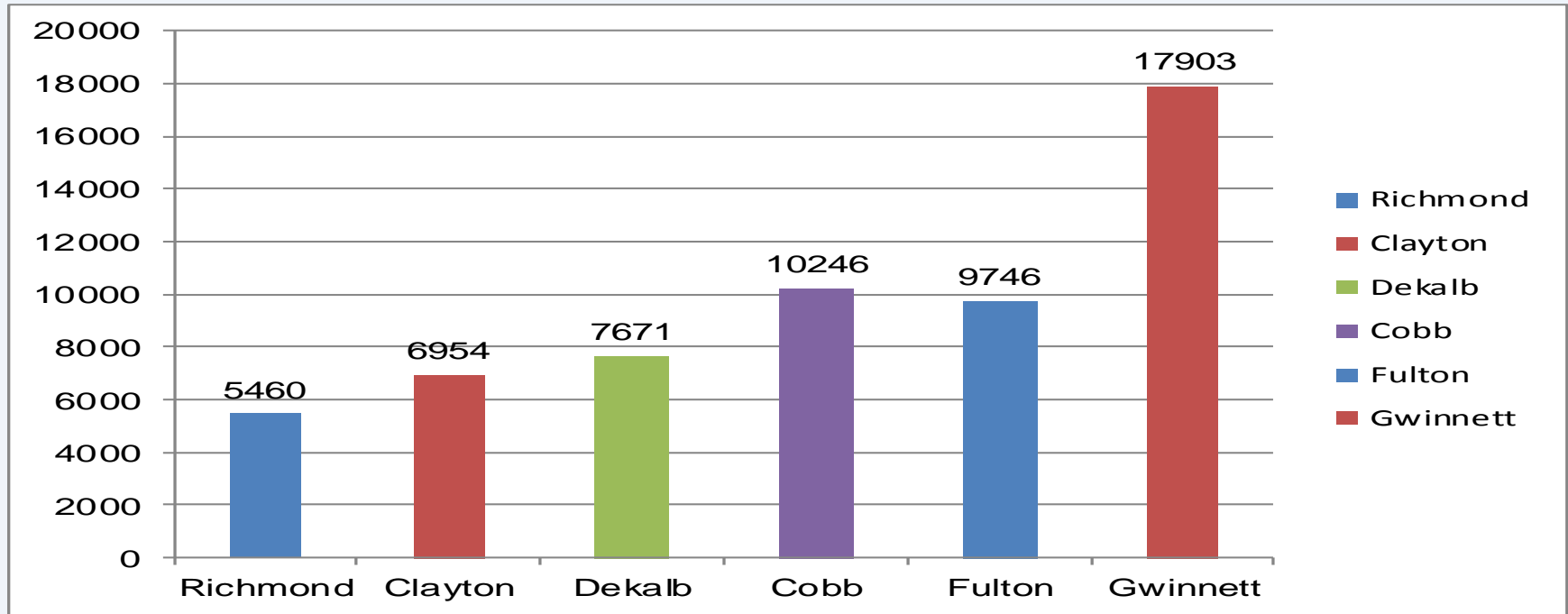
2016 Budget Presentation

September 3, 2015

Organization Chart

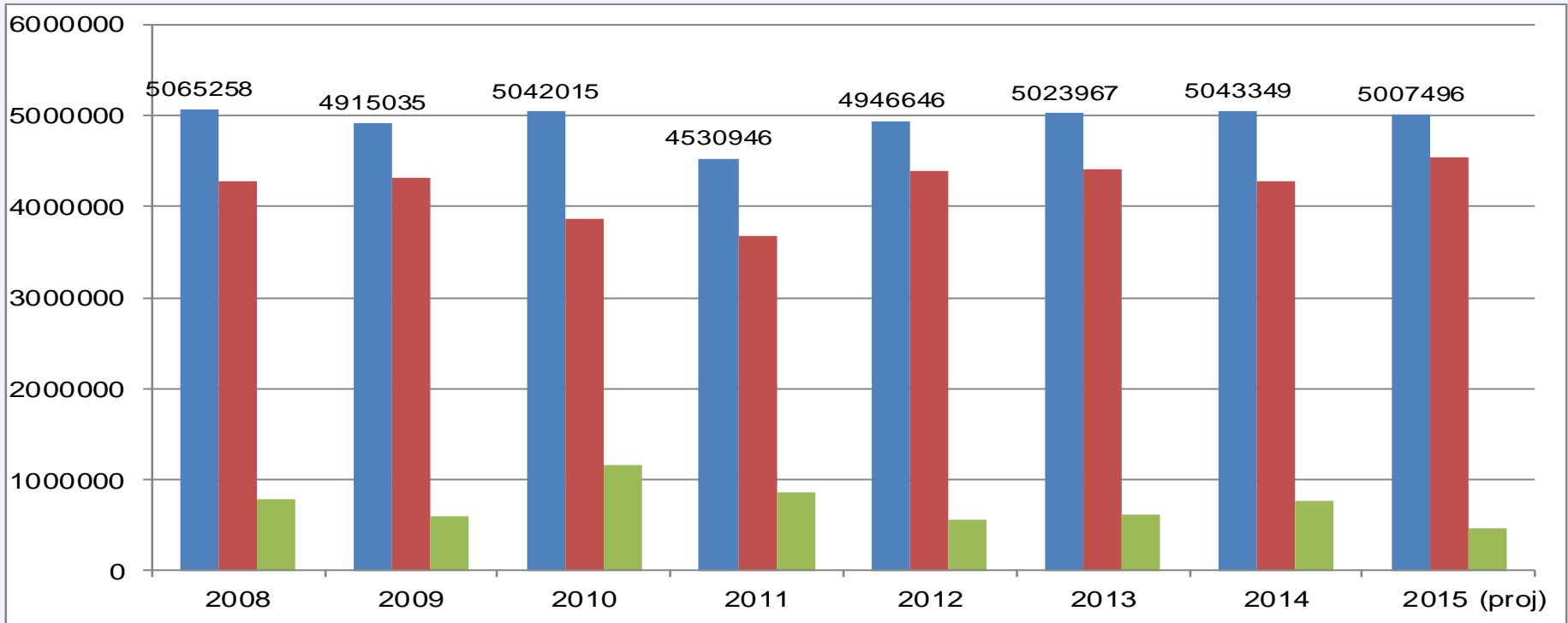


STAFFING COMPARISON PER CAPITA



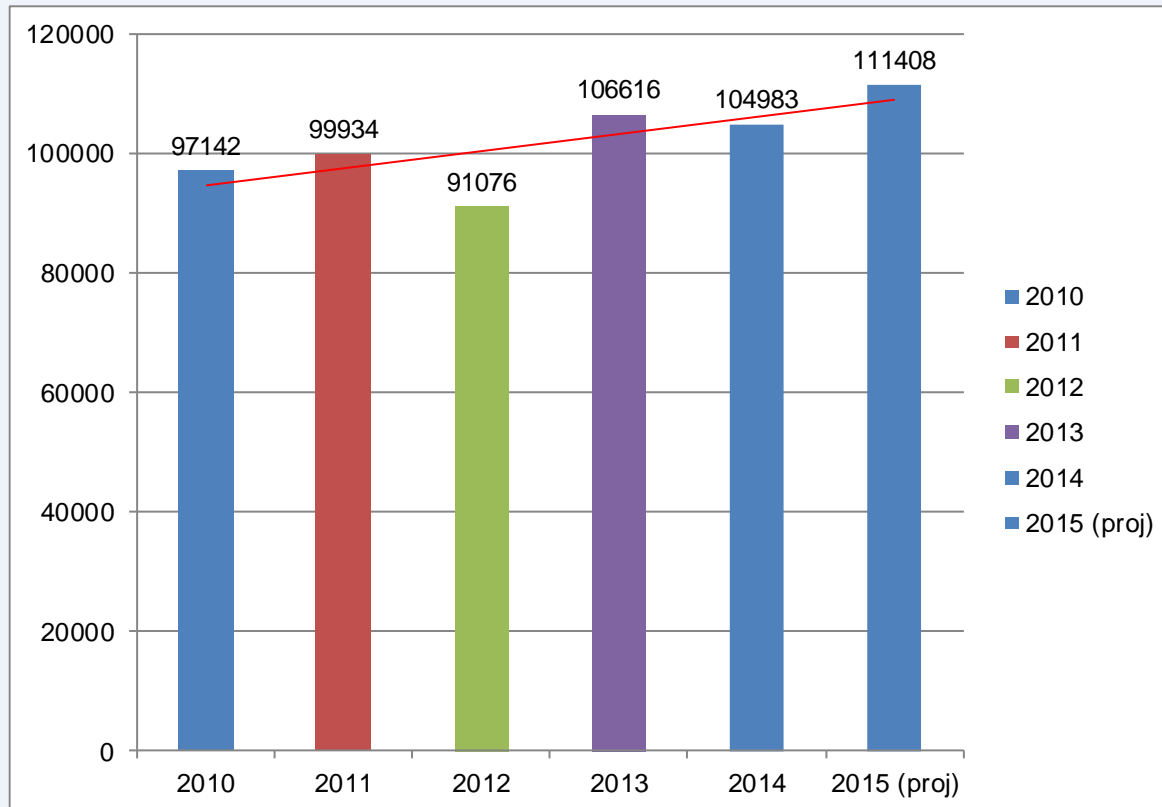
| County | Judge | Staff | Population | Per Capita |
|------------|-------|-------|------------|------------|
| Gwinnett * | 6 | 48 | 859,304 | 17,903 |
| DeKalb | 7 | 93 | 713,340 | 7,671 |
| Cobb * | 12 | 70 | 717,190 | 10,246 |
| Fulton | 10 | 101 | 984,293 | 9,746 |
| Clayton | 5 | 38 | 264,220 | 6,954 |
| Richmond | 4 | 37 | 202,003 | 5,460 |

OVERALL BUDGET

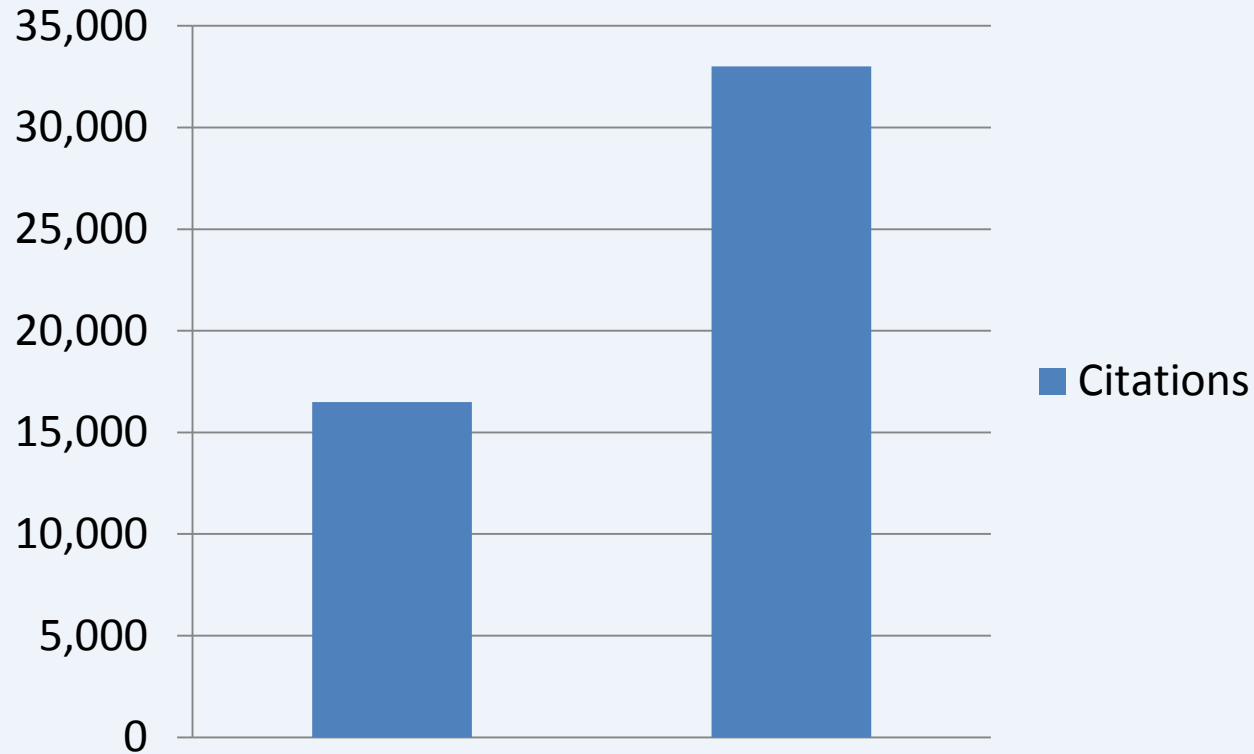


| Year | Adopted | Spent | Returned |
|--------------------|-----------|-----------|-----------|
| 2008 | 5,065,258 | 4,285,423 | 799,835 |
| 2009 | 4,915,035 | 4,316,739 | 598,296 |
| 2010 | 5,042,015 | 3,874,340 | 1,167,675 |
| 2011 | 4,530,946 | 3,676,623 | 854,323 |
| 2012 | 4,946,646 | 4,388,223 | 558,423 |
| 2013 | 5,023,967 | 4,412,682 | 611,285 |
| 2014 | 5,043,349 | 4,484,573 | 558,776 |
| 2015 (proj) | 5,007,546 | 4,545,254 | 462,292 |

RECORDER'S COURT CITATIONS RECEIVED

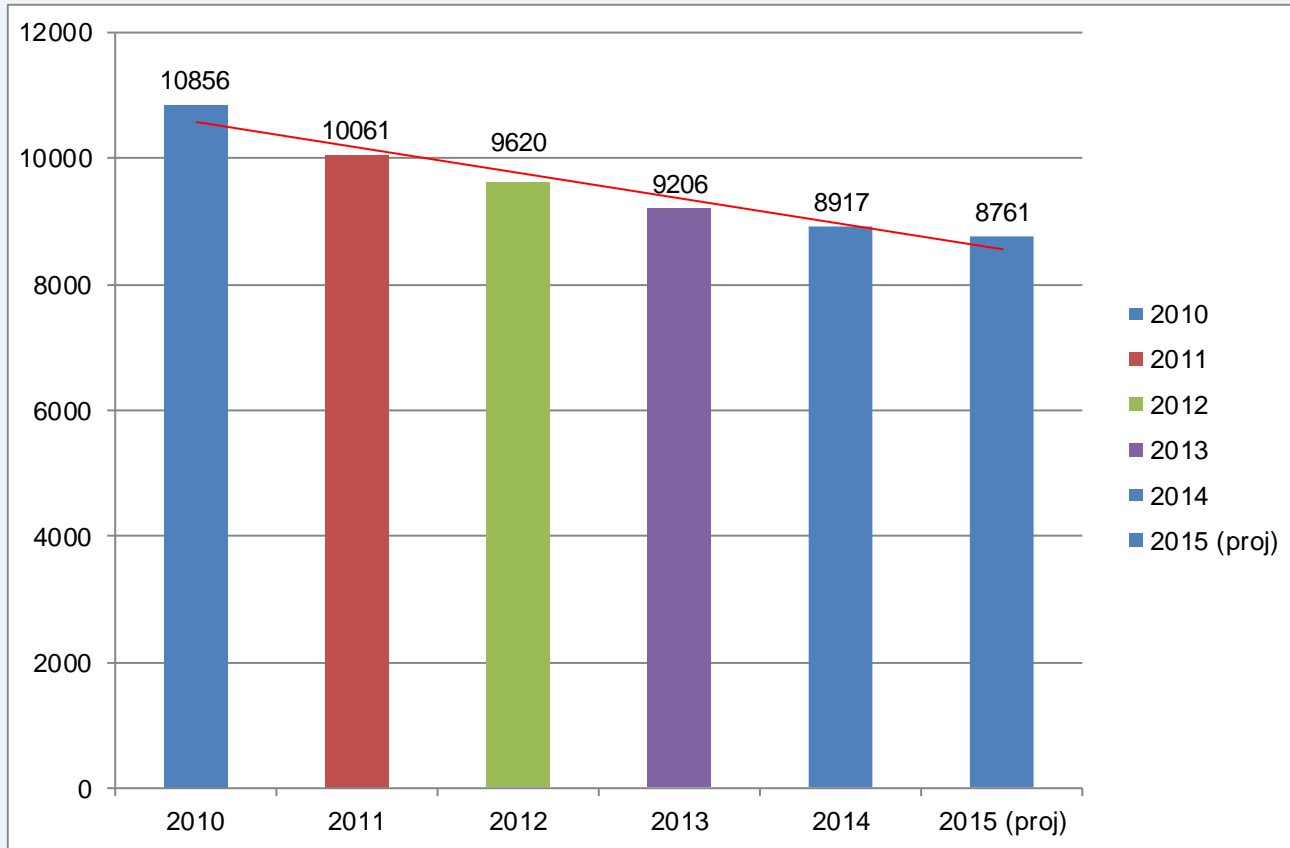


School Bus Camera Citations Received

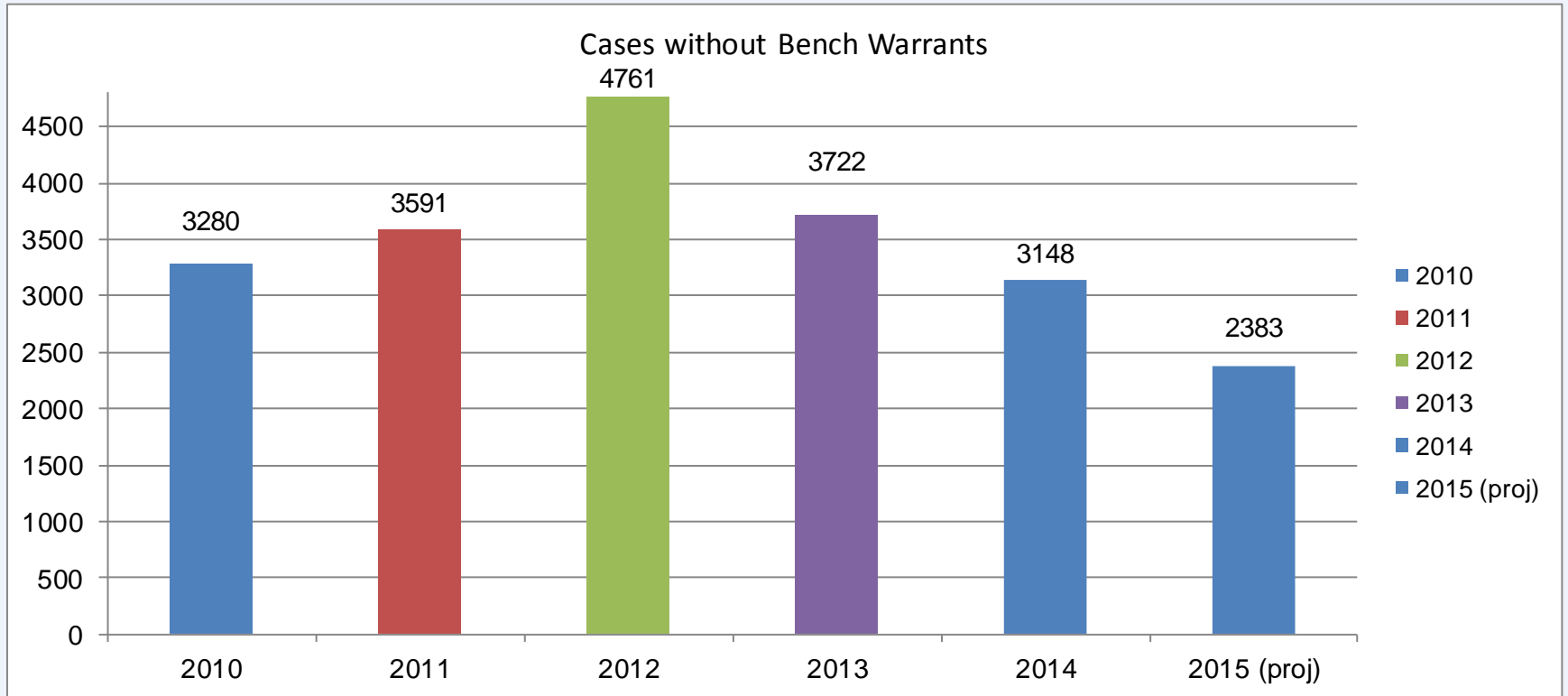


| Year | Citations |
|-------------|-----------|
| 2015 (proj) | 16,500 |
| 2016 (proj) | 33,000 |

STATE COURT CASES RECEIVED

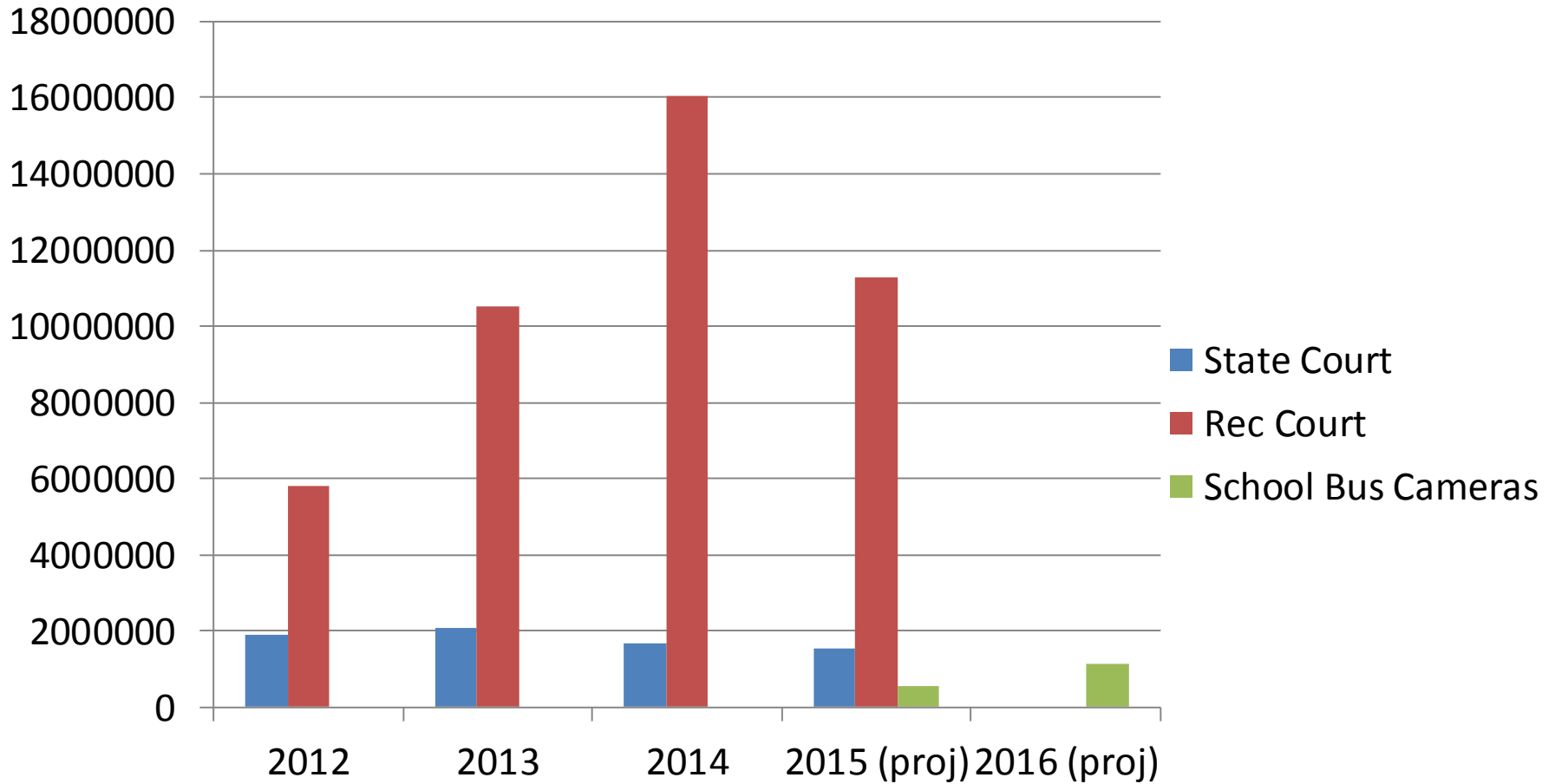


STATE COURT PENDING CASES

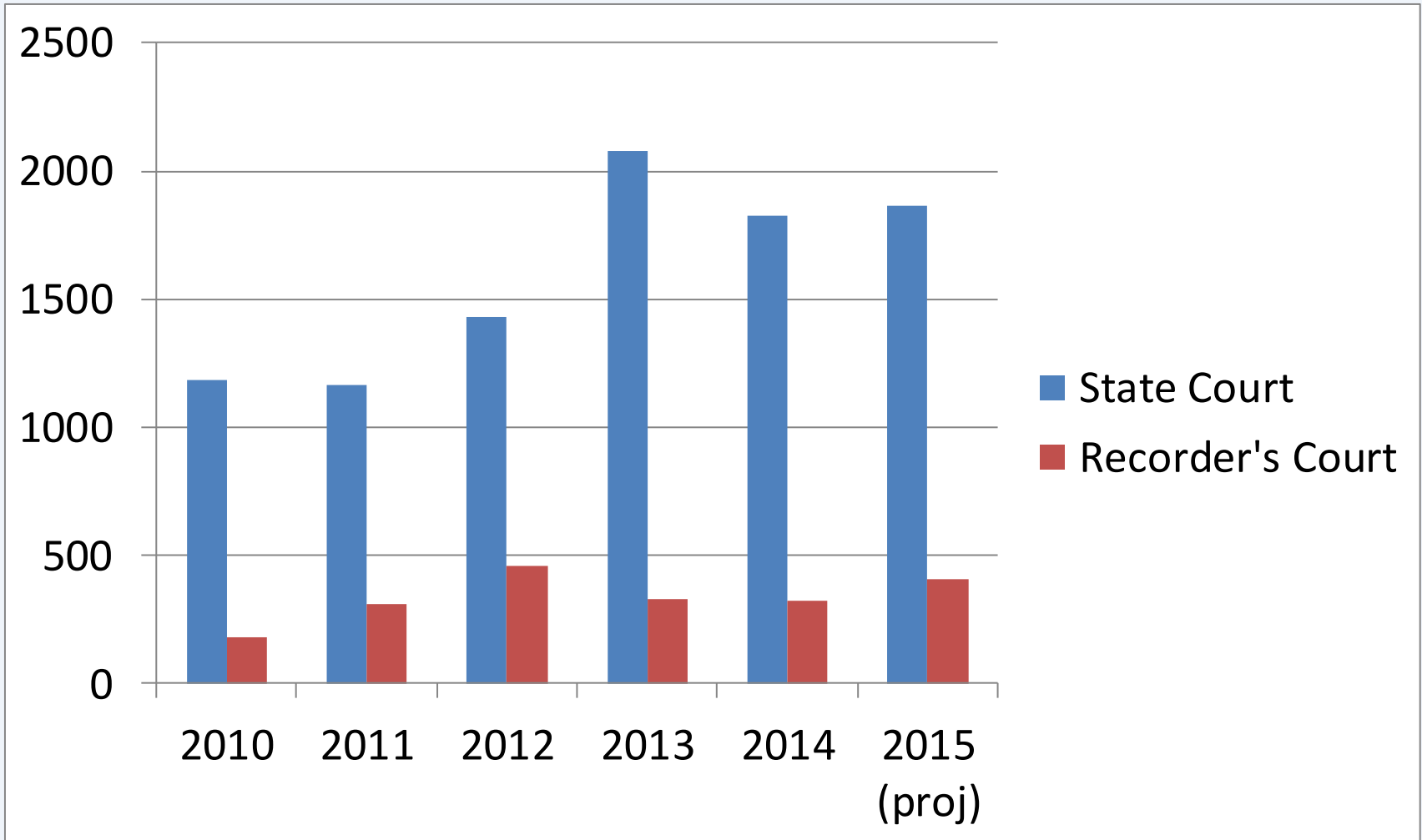


Fines

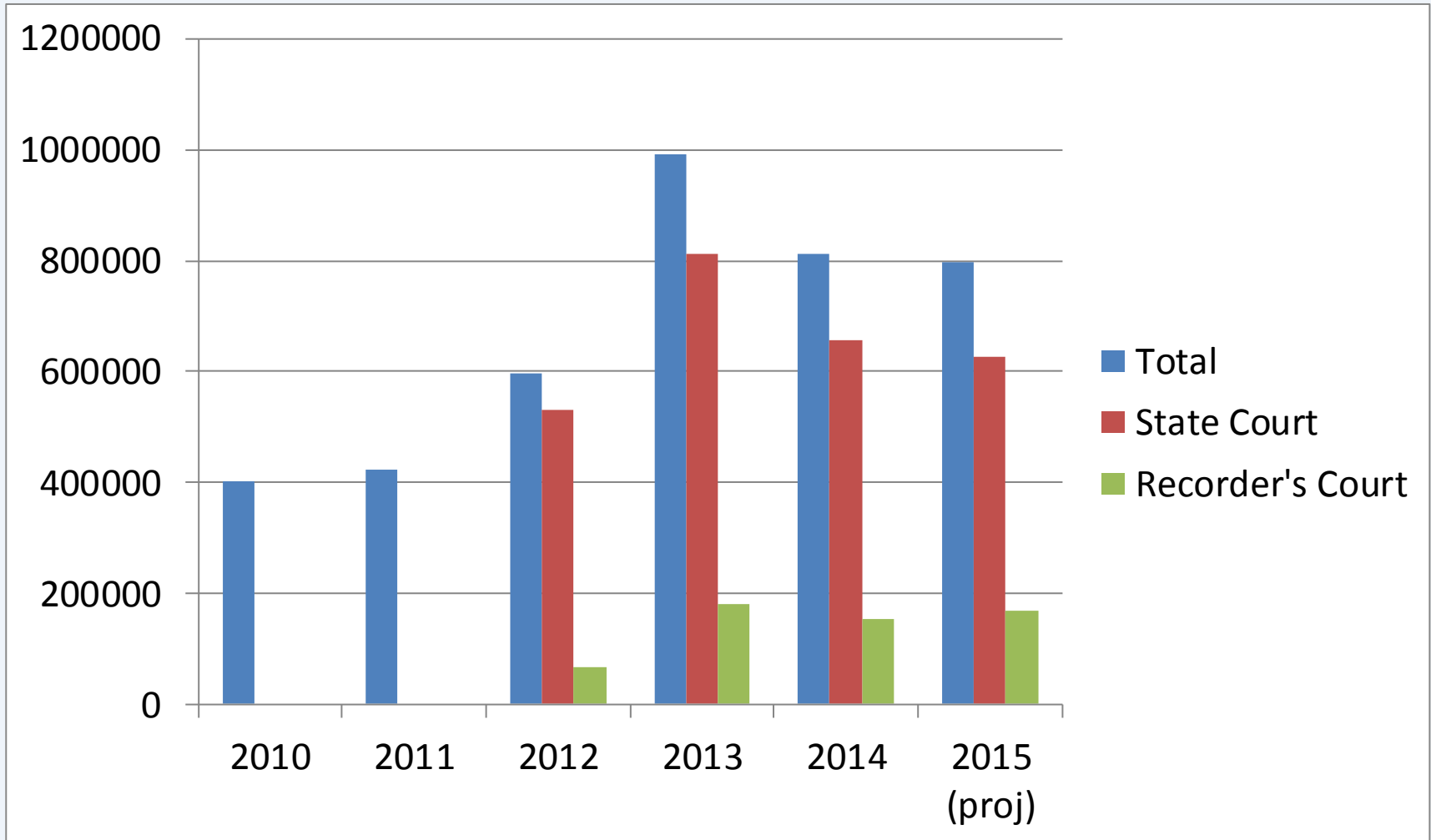
(State Court and Recorder's Court)



Pre Trial Diversion Cases



PTD Program Fees



PTD Community Service Hours

