



Gwinnett

2021

**POLICE**

DEPARTMENT

**GWINNETT COUNTY**

GEORGIA



# TABLE OF CONTENTS

<b>Letter from the Chief</b>	<b>4</b>
Mission, Vision, Values	5
Organizational Chart	6
<b>Office of the Chief</b>	<b>7</b>
Chief of Staff	7
<b>Administrative Bureau</b>	<b>8</b>
Administrative Services Division	8
Communications Division	11
Support Operations Division	12
Office of Emergency Management	15
<b>Operations Bureau</b>	<b>16</b>
Criminal Investigations Division	16
Uniform Division	19
<b>Appendix</b>	<b>22</b>
Appendix A: Precinct Map	22
Appendix B: Crime Data: Uniform Statistics 2011 – 2021	23
Appendix C: Part 1 Crimes/Statistical Data 2011 – 2021	24
Appendix D: Personnel Allocations 2011 – 2021	25

---

# BOARD OF COMMISSIONERS

---



**Nicole Hendrickson**  
*Chairwoman*



**Kirkland Carden**  
*District 1*



**Ben Ku**  
*District 2*



**Jasper Watkins III**  
*District 3*



**\* Matthew Holtkamp**  
*District 4*

---

# COUNTY ADMINISTRATION

---



**Glenn Stephens**  
*County Administrator*



**Maria Woods**  
*Deputy County Administrator*

\* Matthew Holtkamp was sworn in as District 4 Commissioner in December 2022.

# LETTER FROM THE CHIEF



*J. D. McClure*

**J. D. McClure**  
Chief of Police

2021 saw changes within the police department as we began to cautiously, but optimistically, plan for a return to normalcy after the challenges of the last few years. In August, Chief Brett West announced his retirement after 30 years of service to the residents of Gwinnett. His contributions to the police department over the years are too numerous to count and as the new chief, I plan to keep up the momentum. As Chief, accountability is a priority for the agency, and we rely on the COMPSTAT system to analyze and respond to crime trends. I plan to implement the COMPSTAT program in our Communications Division to identify and resolve any issues that could impact the department's ability to receive and respond to emergency calls.

In 2021, the Gwinnett Police Department was awarded the Tri-Arc Award from the Commission on Accreditation for Law Enforcement Agencies (CALEA). In the United States, only 21 other agencies hold this accreditation. Our agency is the only agency in Georgia that holds the Tri-Arc accreditation. This award symbolizes our long-standing commitment to maintaining high professional standards.

The Gwinnett Police Department has initiated a police mental health collaboration with Viewpoint Health and created our Behavioral Health Unit. In 2021, the first specially trained co-responder team came online. They are able to respond to in-progress crisis calls, conduct follow-up visits, and help consumers navigate the mental and behavioral health systems.

Throughout 2021, the Community Affairs Section has continued to pick up momentum in our community. They held dozens of public events, and worked with local non-profits and community groups to create partnerships to foster a spirit of collaboration. CAS provides educational programs to our residents like car seat installation, active shooter training, burglary prevention, and many more safety-oriented topics.

Our agency is also embracing technology as a force multiplier and investigative tool. This year we launched the School Zone Safety Program, with speed cameras at four schools to address speeding violations in school zones and increase safety. We now have 10 mobile FLOCK cameras which can be placed anywhere in the county. These cameras notify officers when a stolen vehicle, wanted person, or stolen plate is in their patrol area. Detectives can access this information to identify suspects and suspect vehicles in all types of cases. We continued to work with our law enforcement partners and vendors to build the Situational Awareness Crime Response Center (SACRC) to monitor situations in real time and provide vital information to officers in the field.

The mission statement of our agency states, "The Gwinnett Police Department is committed to serving the community through the delivery of professional law enforcement services in an unbiased and compassionate manner in order to protect the lives and property of the citizens and improve the quality of life in our community." Over the course of 2021, we looked for ways to innovate and respond to the needs of the community we serve. Our staff of both sworn officers and civilian personnel are essential to the department's mission of service, and every day they strive for excellence.

As Chief, I believe that the partnership between the police department and the residents we serve is of the utmost importance, and I am committed to continuing to work together to make Gwinnett a great place to live, work, and play.

# MISSION, VISION, VALUES

## Mission

The Gwinnett County Police Department is committed to serving the community through the delivery of professional law enforcement services in an unbiased and compassionate manner in order to protect the lives and property of the citizens and improve the quality of life in our community.

## Vision

The vision of the Gwinnett County Police Department is to be regarded by the community we serve, and our law enforcement peers as the leader of innovative policing and professional excellence.

## Values

**Integrity:** We are committed to achieving the public's trust by holding ourselves accountable to the highest standards of professionalism and ethics.

**Courtesy:** We will conduct ourselves in a manner that promotes mutual respect with the community and our peers.

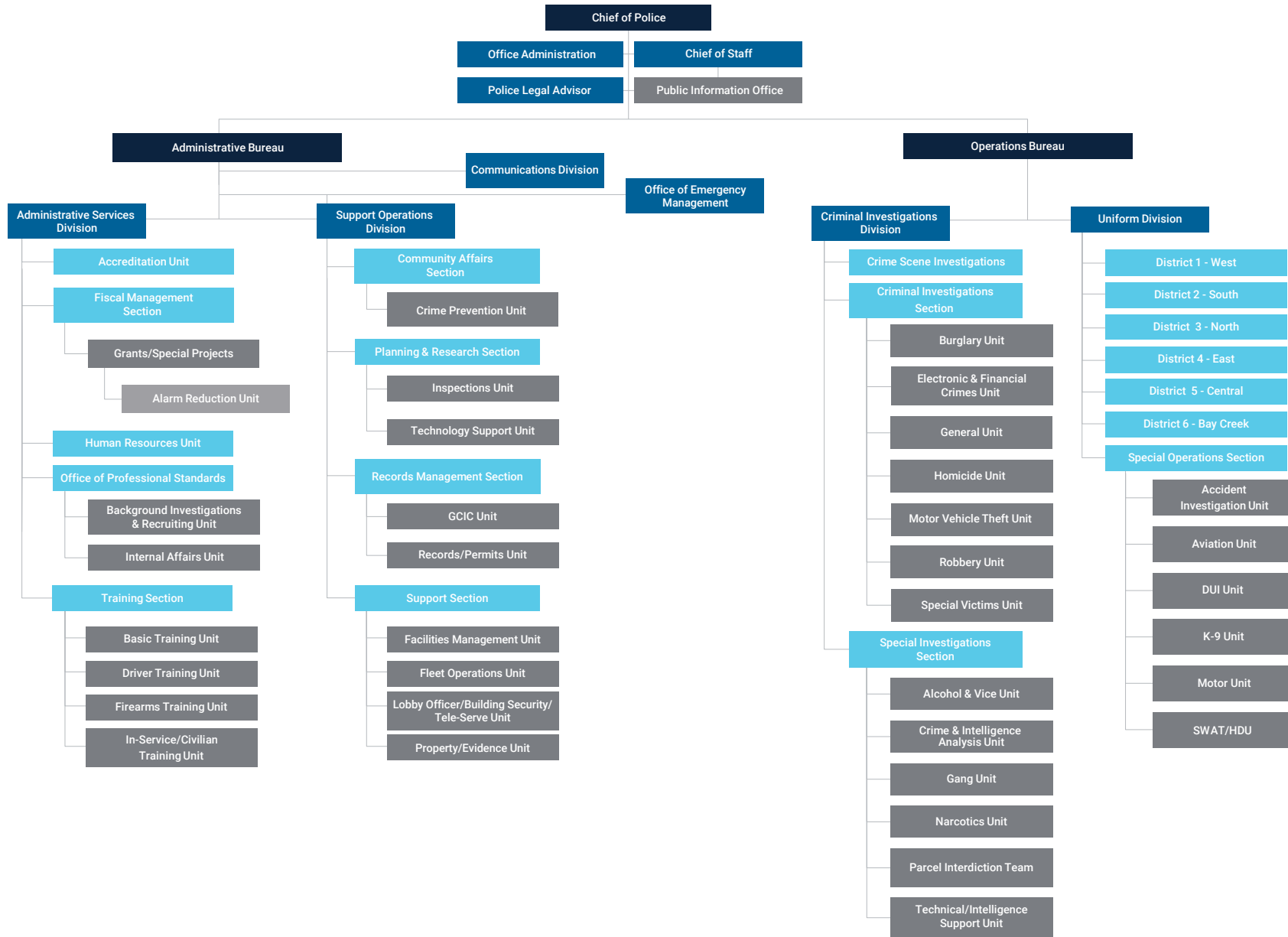
**Pride:** We are committed to conducting ourselves in a manner that brings honor to ourselves, our department, and the community we serve.

**Professional Growth:** We are committed to developing future leaders through training and education.





# GWINNETT POLICE ORGANIZATIONAL CHART | EFFECTIVE SEPTEMBER 18, 2021



# OFFICE OF THE CHIEF

The mission of the Gwinnett County Police Department's Office of the Chief is to provide direction and leadership to the members of the department and to ensure that the integrity and high standards of the department are maintained while planning for the future to ensure the delivery of the highest quality law enforcement services to all of our citizens.

The Office of the Chief is composed of the following: Chief of Police, Administrative Staff, Chief of Staff, Promotional Coordinator, and the Public Information Office.



**J. D. McClure**  
Chief of Police

## Chief of Police

The Chief of Police is ultimately responsible for the planning, directing, coordinating, controlling, and staffing of administrative and operational activities of the department. He has within his authority the responsibility to, at his discretion, appoint, promote, demote, and terminate personnel within the department. The Chief oversees all departmental fiscal activities, ensures the enforcement of all rules and regulations, serves as the official representative of the department when required by protocol, and performs any other executive action that may directly or indirectly effect the Police Department. The Chief of Police reports to the County Administrator and to the Board of Commissioners all departmental activity as required.



**Major J. Rozier**  
Chief of Staff

## Chief of Staff

The Chief of Staff oversees the Public Information Office. The Chief of Staff or his designee serves as the promotional coordinator. Additionally, the Chief of Staff is responsible for coordinating with the Law Department all issues regarding lawsuits, legal opinions, and human resources issues requiring legal guidance.

## Promotional Coordinator

The Chief of Staff, or his designee, will serve as the Promotional Coordinator to act as the liaison with the Department of Human Resources for all promotional processes. The coordinator will have the authority and responsibility for administering the Department's role in the process and will keep the Chief of Police apprised of matters pertaining to the administration of the promotional process.

## Public Information Office

The Public Information Office is responsible for coordinating the Department's response to media inquiries, assisting news personnel in covering routine news stories, acting as a liaison at major incident scenes, providing on-call response to news media, and preparing and distributing news releases.

Media Releases	Interviews
142	183

# ADMINISTRATIVE BUREAU



**P. T. Cronin**  
*Deputy Chief*

The Administrative Services Division, the Support Operations Division and the Office of Emergency Management are assigned to the Administrative Bureau. The Administrative Bureau is commanded by a Deputy Chief.



**S. K. Shaw**  
*Assistant Chief*

## Administrative Services Division

The mission of the Administrative Services Division is to manage the fiscal processes including budget and capital projects; to recruit personnel and investigate complaints; to conduct staff inspections; to coordinate the volunteer program; to oversee the basic and in-service training of departmental personnel; to maintain accredited status through the state certification program and the Commission on Accreditation for Law Enforcement Agencies; and to provide administrative support in payroll and human resources.

The Division consists of the following:

- Accreditation Unit
- Fiscal Management Section
- Human Resources Unit
- Office of Professional Standards
- Training Section

The Administrative Services Division Commander is responsible for planning, directing, coordinating, controlling, and staffing the administrative and operational activities for the Division. Personnel assigned to these functions report to the Administrative Services Division Commander.

The Administrative Services Division is responsible for aiding and guiding employees and staff members in resolving problems. The division issues and assists in the interpretation of Merit Rules & Regulations and Department and County policies. Additionally, the Administrative Services' staff is responsible for developing the department's business plan.

### Accreditation Unit

The Accreditation & Certification Manager is responsible for coordinating the department's efforts to maintain state certification and national accreditation standards. The Commission on Accreditation for Law Enforcement Agencies, Inc. (CALEA) awarded the department with accreditation for the ninth time. By attaining accreditation status, the Gwinnett County Police Department has demonstrated compliance with more than 400 standards that CALEA has established to promote fair and professional law enforcement services in the areas of policy, procedures, management, and operations.



## Fiscal Management Section

The Fiscal Management Section oversees the budget for daily operations and capital projects, monitors account balances and overtime to keep from exceeding allocations, processes all purchases and payments for the department, and oversees expenditures and purchases to ensure compliance with County policy.

## Grants/Special Projects

The Grants/Special Projects Coordinator is responsible for coordinating the development and administration of all grants from all sources. Examples include the Justice Assistance Grant and Department of Homeland Security Grant. This position is also responsible for all contracts relating to Police operations. In addition, the coordinator is responsible for projects assigned by the Division Director.

## Alarm Reduction Unit

The Alarm Reduction Unit enforces the Gwinnett County Alarm Ordinance by registering all alarm users, tracking false alarm activations, billing and receiving fines from alarm owners for violations of the alarm ordinance.

Response	Fee
1 <sup>st</sup>	\$0
2 <sup>nd</sup>	\$25
3 <sup>rd</sup>	\$50
4 <sup>th</sup> +	\$100

Following the fourth response, the violator is subject to a \$100 fee and the alarm registration may be revoked. A \$25 fee can be charged for a response to an alarm which is not registered with the Police Department.

In 2021, the department transitioned from in house alarm fee processing to privatized alarm fee collection via CryWolf. Due to this transition, all alarms through the County had to be re-registered through CryWolf. Because of this transition, the department waived alarm fees from July 2021 to January 1, 2022.

## Human Resources Unit

The Human Resources Unit processes payroll, timesheets, and position control; maintains personnel files; and addresses other personnel issues for an ever-increasing authorized strength of police employees.

This unit serves as liaison to the county's Department of Human Resources and Department of Financial Services in such matters as FMLA, Accident/Property Loss reports, and worker's compensation.

## Office of Professional Standards

The Office of Professional Standards is composed of the Background Investigations and Recruiting Unit and the Internal Affairs Unit.

### Background Investigations and Recruiting Unit

The Background Investigations and Recruiting Unit is responsible for recruiting the most qualified personnel that reflects the demographics of the county and ensuring those candidates are qualified and meet hiring guidelines established by the department, Human Resources Department, and the Merit System Rules and Regulations. This unit also processes all internship applications, makes selections, and schedules all required hours.

In 2021, the department received 4,295 applications for both sworn and non-sworn positions and hired 95 police officers and 49 non-sworn employees.

### Internal Affairs Unit

The Internal Affairs Unit is responsible for recording, registering, and investigating complaints against employees of this department; supervising and monitoring the investigation of alleged misconduct; and maintaining the confidentiality of investigations and records so that the integrity of the department is maintained in an objective, impartial, and fair manner.

In 2021, the Internal Affairs Unit along with department supervisors investigated 130 allegations of misconduct, policy violations, or other inquiries. Of these allegations, 101 were sustained, seven were not sustained, 10 were exonerated, nine were unfounded and 3 were administratively closed.

## Training Section

The Training Section is responsible for all training conducted in this department, including basic recruit training and in-service training. Other responsibilities of the Training Section include, but are not limited to planning, developing, implementing and coordinating in-service, remedial, and advanced training programs; conforming to all Peace Officer Standards and Training Council rules, regulations and policies; maintaining department and P.O.S.T. training records; administering the Gwinnett County Police Academy and the Field Training and Evaluation Program; providing quarterly firearms qualifications; providing all sworn personnel with legal updates and recent court decisions; identifying, selecting, and training qualified personnel as instructors; and conducting ongoing research in order to provide state-of-the-art programs which meet departmental needs.



**Michelle N. Miller**  
Acting Director

## Communications Division

The mission of the Communications Division is to receive calls from the citizens of Gwinnett County and dispatch emergency personnel as quickly and accurately as possible, to maintain rapid and accurate communications for the command and the control of personnel resources, and to ensure the safety of field personnel. The Communications Director commands the Communications Division and provides day-to-day supervision.

There are three primary and distinct operational tasks of the division:

- 911/emergency and non-emergency call taking
- Police dispatch
- Fire/EMS dispatch

The primary responsibilities of the division include:

- **Telephone Communications** – receiving emergency and non-emergency calls from the citizens of Gwinnett County.
- **Radio Communications** – proper dispatch of all emergency and non-emergency calls for police service, fire and EMS; responding to all field requests, maintaining and monitoring unit status.
- **Alarm Monitoring** – responsible for the monitoring of the property room, evidence shed and evidence containers.

The Gwinnett County Police Department conducts a 200-hour course for new communications officers which exceeds the 40-hour course required by the state.

911/Communications Activity	Number of Calls
911 Calls Received	450,765
Administrative/non-emergency (Incoming)	233,574
<b>Total Calls Received</b>	<b>684,339</b>
<b>Administrative/non-emergency (Outgoing)</b>	<b>26,360</b>
Calls dispatched (Police)	658,593
Calls dispatched (Lilburn)	24,356
Calls dispatched (Fire and Emergency Services)	109,749
<b>Total Calls Dispatched</b>	<b>792,698</b>



**E. Spellman**  
*Assistant Chief*

## Support Operations Division

The mission of the Gwinnett County Support Operations Division is to strengthen community relations and trust, provide community related and crime prevention programs, coordinate the volunteer program, conduct staff inspections, oversee planning and research for the department, maintain departmental reports, and process Open Records requests. The division also enters law enforcement information into the records management system and Georgia Crime Information Center data base in a timely manner, handles the permitting function for certain businesses/individuals, provides operational support in fleet, ground, and building maintenance and security for the department, maintains evidence collected, and handles calls and reports via telephone.

The division consists of the following units:

- Community Affairs Section
- Planning and Research Section
- Records Management Section
- Support Section
- Technology Support Unit

## Community Affairs Section

The Community Affairs Section was formed in October of 2020. The Crime Prevention Unit was re-assigned to this new section. The Community Affairs Section plays a critical role in the department’s refocused approach to achieving and sustaining gains against crime by strengthening community relationships and trust. The Community Affairs Section will partner with community leaders, civic organizations, homeowner associations, and concerned citizens to educate them on police policies and practices, and to develop solutions to challenges that arise within the county’s many diverse communities. The Community Affairs Section also provides young people with enrichment and intervention programs, helping reduce youth crime. Community affairs officers and crime prevention officers are assigned to each police precinct and stay closely connected with the community. In 2021, the Volunteer Program function was reassigned to the Community Affairs Section.

### Crime Prevention Unit

The Crime Prevention Unit provides community-related and crime prevention programs as well as crime prevention tips that help prevent community members from being victimized. The unit also participates in local and national annual events.

### Volunteer Program

The Community Affairs Section is responsible for the operation of the Volunteer Program. The section is responsible for processing all applications for volunteer service as well as placement and tracking of those volunteers.

### Volunteer/Intern Working Hours

3,573

## **Planning and Research Section**

The Planning and Research Section is comprised of the Inspections Unit and the Technology Support Unit. The Section Manager oversees the day-to-day operations of the Section and reports to the Support Operations Division Commander but has ready access to the Chief of Police as needed for the planning and research function. This Section is responsible for analyzing and conducting evaluations of police operations and statistics, conducting staff inspections, conducting research on assigned projects, and providing long range planning for capital projects.

The Inspections Unit conducts staff inspections. A staff inspection is conducted within all organizational components at least once every four years. At his discretion, the Chief of Police may direct additional staff inspections. During an inspection, members of the inspection team have the same authority as the Chief of Police to examine departmental property, records, and documents.

The Technology Support Unit is responsible for ensuring that the technology projects that the department is adopting are tracked and followed through to completion. The Unit collaborates with various units to assist with prioritization and progress of these projects and to ensure that technology needs of the Gwinnett County Police Department are managed professionally.

## **Records Management Section**

The goal of the Records Management Section is to ensure the entry of law enforcement information into the records management system and Georgia Crime Information Center database in a timely manner. It's goal is also to process all requests made under the Georgia Open Records Act in a timely manner and in accordance with all applicable and current laws. The section will also handle the permitting function for certain business/individuals.

The Record Management Section is comprised of two units:

### **GCIC Unit**

The GCIC Unit is responsible for entry and removal of identified property that has been stolen or recovered. These files must be entered in GCIC/NCIC files within twelve hours after a Gwinnett County Police Department Incident Report has been completed. GCIC will make entries for all missing persons including runaways immediately. GCIC is required to participate in the record validation program established and administered by GCIC/NCIC. Additional responsibilities consist of the training of all agency employees who work with CJIS data, affected CJIS data, or use a CJIS network terminal. This training provides employees with a working knowledge of Federal and State regulations and the laws governing the security of information.

### **Records/Permits Unit**

The Records/Permits Unit is responsible for obtaining, separating, assigning, processing, distributing and maintaining all incident, traffic accident, and arrest reports along with criminal histories, traffic citations, crime lab reports, investigative reports, and supplemental reports which are generated by the Police Department. The Unit is also responsible for the retrieval of all reports for dissemination to the public, court officials, and law enforcement officers. The Unit also answers the main switchboard lines and routes calls appropriately. The dissemination of reports will be consistent with state law and departmental policy. Requests submitted under the Open Records Act will be processed and handled in accordance with applicable laws. Open Records requests are taken by phone, email or in person. The Unit processes criminal history/background checks on applicants and issues permits for persons involved in the sale and distribution of alcohol, escort/dating service, solicitors, pawn shop employees and other individuals requiring police background checks. The Unit also provides fingerprints services and statements of 'no records' to persons requiring them. The Major over Records Management is responsible for overseeing the Unit and for the proper storage, retention, destruction, and distribution of records.

During 2021, the Unit issued 4,610 permits, 1,026 background checks (179 were for new businesses for License and Revenue). They fingerprinted 2,875 people and there were 23 denials/holds. They also arrested 26 individuals and collected \$517,125 in revenue.



## Support Section

The goal of the Support Section is to manage ancillary support functions of the agency to include:

- Providing a safe and efficient environment for the secure storage of all evidence and property recovered by members of the department.
- Enhancing the safety and security of the work environment for members of the Police Department and its visitors to the Headquarters facility.
- Enhance service to the community by constructing police reports over the telephone, thereby eliminating the need for zone cars to be dispatched to calls generally considered informational or for report purposes that usually require no investigative follow-up.
- Coordinating maintenance and construction projects at all police facilities.
- Managing and maintaining fleet operations in coordination with Gwinnett County Fleet Maintenance.

The Support Section is comprised of four units:

- Facilities Management Unit
- Fleet Operations Unit
- Lobby Officer/Building Security/Tele-Serve Unit
- Property and Evidence Unit

### Facilities Management Unit

The Facilities Management Unit is responsible for facility repairs and maintenance, and all construction-related projects. The Police Department has 11 facilities:

- Headquarters
- Police Annex
- Six precincts
- Training Academy
- Aviation Hangar
- K-9

### Fleet Operations Unit

The Fleet Operations Unit serves as the liaison between the Gwinnett County Police Department and the County's Fleet Management Division. The Fleet Operations Unit is responsible for maintaining all police vehicle records, completing vehicle service request, issuance of vehicles and the overall general maintenance of all police vehicles.

### Lobby Officer/Building Security/Tele-Serve

The Lobby Officer's responsibilities include screening visitors, vendors and deliveries to the Headquarters' facility and monitoring security of the lobby, the building, parking lots and grounds to include video surveillance recordings. The officer enforces state law and county ordinances as needed and resolves conflicts in the lobby regarding incidents of a non-enforcement nature.

The Lobby Officer assists crime victims and other members of the public who enter the lobby of Police Headquarters by facilitating contacts with Investigators, Crime Scene Investigations Unit, Evidence, and other personnel. The officer also fields inquiries regarding the criminal justice process and locations of the various government installations and assists visitors who have difficulty understanding English in utilizing the Language Line as needed.

The Lobby Officer prepares reports on crimes and accidents beyond the scope or abilities of the Tele-Serve Unit and handles other duties as assigned.

Tele-Serve Operators are civilian employees who are responsible for handling calls for service and preparing police incident reports via the telephone or for citizens who come to police headquarters. Tele-Serve Operators are only authorized to complete certain types of reports as described in the Gwinnett County Police Department General Directives Manual.

### Property and Evidence Unit

The Property and Evidence Unit is responsible for properly recording, safeguarding, and storing all property that is secured into police custody. The Property and Evidence Room must be maintained as mandated by federal, state, and local ordinances. A chain of custody must be established and maintained until final disposal of property. It is also responsible for transporting evidence to the GBI crime lab, providing 24-hour on-call support, and ensuring all property is disposed of according to the statutory and departmental guidelines. The Property and Evidence Unit Manager is accountable for maintaining the Unit and for the proper storage and disposition of all property.



**G. W. Swanson**  
*Director*

### Office of Emergency Management

The Office of Emergency Management is responsible for developing, evaluating, and revising policies and emergency response plans for the protection of Gwinnett County residents, visitors, and infrastructure. The cornerstone of these plans is the Gwinnett County Emergency Operations Plan. Emergency Management serves as liaison to, and coordinates emergency planning efforts with, County government departments, local, state, and federal governments, and community shareholders. Emergency planning efforts address a wide variety of potential hazards, including man-made, natural, and biological threats.



# OPERATIONS BUREAU



**J. J. Jones**  
*Deputy Chief*

The Criminal Investigations Division and the Uniform Division are assigned to the Operations Bureau. The Operations Bureau is commanded by a Deputy Chief.



**G. M. Higginbotham**  
*Assistant Chief*

## Criminal Investigations Division

The mission of the Gwinnett County Police Criminal Investigations Division is to conduct follow-up investigations of criminal violations of the law and provide crime scene and evidence recovery services.

The Criminal Investigations Division is composed of Crime Scene Investigations, the Criminal Investigations Section, and the Special Investigations Section.

**Crime Scene Investigations** – This Unit provides evidence collection and documentation and scientific investigative services to all elements of the Department.

**Criminal Investigations Section** – This Section includes the following: Burglary Unit, Electronic and Financial Crimes Unit, General Unit, Homicide Unit, Motor Vehicle Theft Unit, Robbery Unit, and Special Victims Unit.

**Special Investigations Section** – This Section includes the following: Alcohol and Vice Unit, Crime and Intelligence Analysis Unit, Gang Unit, Narcotics Unit, Parcel Interdiction Team, and Technical/Intelligence Support Unit.

The primary functions of the Criminal Investigations Division are criminal investigations, documentation of investigative findings, scientific crime scene processing, narcotics and vice investigations, technical and undercover investigations, collecting, processing, and sharing crime data and intelligence information.



## Crime Scene Investigations

The purpose of Crime Scene Investigations (CSI) is to provide scientific investigative services to all branches of the Gwinnett County Police Department. Its purpose is also to provide photographic processing to the Gwinnett County Police Department and other branches of the County government at the discretion of the Chief of Police. CSI also maintains prisoner mug shots for photo line-ups and fingerprint arrest cards for fingerprint comparisons. These records are obtained from the Gwinnett County Sheriff's Office. Crime Scene Investigations provides ballistic analysis services through the BallisticIQ computer software program and has access to the National Integrated Ballistic Information Network (NIBIN) provided through the Bureau of Alcohol, Tobacco, Firearms and Explosives (ATF). CSI also performs confirmatory marijuana drug identification examinations.

## Criminal Investigations Section

### Burglary Unit

The Burglary Unit is responsible for investigating commercial and residential burglaries, burglary attempts, and related crimes as directed by the Unit supervisor. Commercial cases are primarily business, church, and school burglaries. Residential cases are primarily home or dwelling burglaries.

### Electronic and Financial Crimes Unit

The following are examples of the types of crimes investigated by the Electronic and Financial Crimes Unit:

- Questioned document offenses (excluding deposit account fraud/bad check offenses)
- Forgeries
- Embezzlements
- Financial transaction card theft/fraud
- Financial exploitation of elderly or incapacitated adults
- Theft by deception/conversion involving business records, bribery, computer fraud, information systems theft, and other Computer Systems Protection Act violations
- Insurance fraud

- Advanced fee loan scams
- Identity theft fraud
- Mortgage fraud
- Telemarketing fraud
- Internet crimes
- Electronic surveillance crimes
- Other financial or electronic related crimes as determined by the unit supervisor

### General Unit

The General Unit is responsible for investigating crimes involving thefts of physical property, entering autos, terroristic threats and acts, criminal damage to property, reckless conduct, stalking, battery, and other crimes as designated by the Division Commander.

### Homicide Unit

Investigators assigned to the Homicide Unit primarily investigate adult felony crimes against persons including murder, assaults, kidnappings, missing persons, and suspicious deaths.

### Motor Vehicle Theft Unit

The Motor Vehicle Theft Unit is responsible for the follow-up investigation of stolen and recovered motor vehicles and related conveyances. The unit maintains record of the vehicle impounds for one (1) year. They also monitor the Gwinnett County contract wrecker service(s) responsible for the impoundment and storage of vehicles.

### Robbery Unit

Investigators assigned to the Robbery Unit primarily investigate armed robbery, robbery by force, robbery by intimidation, home invasion robbery, robbery by sudden snatch, and hijacking of a motor vehicle.

### Special Victims Unit

The Special Victims Unit's primary responsibility will be the investigation of physical abuse against children under the age of 18 and sexual abuse/assaults against both children and adults. The unit may also be responsible for the investigation of any other persons' crimes against children under the age of 17 with the exception of robbery or homicide. This unit is also tasked with the investigation of physical abuse which is directed against persons who are 65 years of age or older. Other crimes targeting the elderly, such as financial crimes, will be investigated by the Unit most appropriate to the crime. The unit handles Internet Crimes Against Children (ICAC) investigations that are investigated as a team effort with the Georgia Internet Crimes Against Children Task Force; created by the Georgia Bureau of Investigations.

### Special Investigations Section

Total Arrests	Search Warrants	Drugs Seized (Retail Value)	Currency Seized
2,503	286	\$93,674,375	\$882,775

### Alcohol and Vice Unit

The Alcohol Unit is responsible for the enforcement of County ordinances and state laws related to the sale and consumption of alcoholic beverages. Alcohol inspections are conducted to ensure compliance with local ordinance and state law. Personnel assigned this function assist the Permits Unit and Occupational Tax Certificate Office.

Normally, personnel assigned to the Unit will conduct semiannual inspections of consumption-on-premises establishments. Additional inspections are conducted as new businesses open, as managers change, or when other conditions dictate.

The Vice Unit is responsible for the enforcement of county ordinances and state laws such as prostitution, gambling, some street level narcotics, counterfeit apparel and accessories, and Licensing and Revenue Office regulatory ordinances and offenses. The Vice Unit also investigates sex trafficking and participates in the FBI MATCH Task Force. The Vice Unit works with the Georgia Bureau of Investigation's Internet Crimes

Against Children (ICAC) Task Force to conduct proactive investigations against offenders who use the internet and other technology to sexually exploit children.

### Crime and Intelligence Analysis Unit

The Crime and Intelligence Analysis Unit is responsible for systematically collecting, documenting, disseminating, and storing crime and intelligence information in an effort to identify crime patterns and trends for operational deployment of personnel, tactical intervention, strategic planning, and management analysis.

The Crime Analysis function of the Unit processes crime data and information from sources such as incident reports, arrest reports, supplemental reports, field interview forms, as well as other agency reports and records in order to evaluate criminal activity in an effort to identify crime patterns and trends for operational deployment of personnel, tactical intervention, strategic planning, and management analysis.

The Intelligence and Research function of the Unit processes data and information including but not limited to criminal conduct, terrorism and suspicious activities, individuals, and vehicles. Personnel assigned to this function also conduct surveillance and assist in requests for the production of subpoenas and records.

### Gang Unit

The Gwinnett County Police Gang Unit is an investigative and proactive enforcement team intended to improve the quality of life for Gwinnett County residents. This is accomplished through direct enforcement actions in high crime areas and in areas of known gang patterns and trends, and the investigation of reported crimes involving gangs. The Unit is responsible for monitoring and tracking criminal street gang activity through traditional and non-traditional enforcement activities, investigative efforts, intelligence gathering, and intervention/education efforts.

The Gang Unit also assists other Criminal Investigations units on gang-related crimes and street level criminal activity in which CID has investigative responsibility such as a gang-related homicide. In addition, the Unit gathers and disseminates gang intelligence information to members of the department for investigative purposes only and to other law enforcement agencies in compliance with established criteria.



### Narcotics Unit

The Narcotics Unit is responsible for the investigation and control of violations of the Georgia Controlled Substances Act, dangerous drug laws, model glue laws, prescription fraud, and elements included under section 16-13 of the Official Code of Georgia.

There are generally three (3) categories of investigations handled by the Unit. First are those investigations of a short-term nature, typified by street-level users and sellers, which are often conducted through undercover stings. Second are sellers or suppliers of narcotics which require investigations to identify these offenders. Third are the activities of criminal organizations, which are typically long-term in nature and target distributors and transshipments that are using Gwinnett County as a base of operation.

### Parcel Interdiction Team

The Parcel Interdiction Team is an investigative unit that focuses on locating illegal narcotics that are shipped through the mail, UPS, and FedEx. The Parcel Interdiction Team also recovers thousands of dollars for victims of elderly scams.

### Technical/Intelligence Support Unit

The Technical/Intelligence Support Unit is subdivided into three components:

- Asset Forfeiture
- Joint Terrorism Task Force (JTTF)
- Technical Support

### Asset Forfeiture

Upon being notified within 20 days of a seizure of property or cash by an officer or investigator, the Asset Forfeiture Manager shall initiate forfeiture proceedings by having a DA file number assigned to the case. Verification will be made so that forfeiture of the property may proceed according to the laws of Georgia.

### Joint Terrorism Task Force

The department has personnel assigned to the Joint Terrorism Task Force (JTTF) to share homeland security information through the Crime and Intelligence Analysis Unit as well as with state and federal agencies. The JTTF serves as a point of contact for reports of suspicious persons and situations in which there is the potential that domestic and/or international terrorism is being planned or conducted.

### Technical Support

Surveillance and undercover operations equipment is available for use by personnel engaged in lawful criminal investigations. The use of technical equipment will conform to all state and federal laws and will under no circumstances be utilized for personal use.



## Uniform Division

The mission of the Gwinnett County Police Uniform Division is to respond to 911 calls for service, provide preventive patrol and criminal and traffic law enforcement, and conduct preliminary investigations of incidents and traffic crash investigations. The division prepares case and incident reports, performs crime prevention efforts, enforces ordinances related to quality-of-life issues, and provides tactical response to critical incidents.

The primary responsibilities of the Uniform Division include:

- Preventive patrol
- Criminal law enforcement
- Traffic enforcement and control
- Preliminary investigations
- Case and incident reporting
- Accident investigation
- Crime prevention efforts
- Community relations
- Parking enforcement
- Tactical operations
- Maintenance of public order

General Calls	Traffic Calls
331,647	108,778

The Uniform Division is composed of six patrol districts and the Special Operations Section.

### **District 1 – West Precinct**

The West Precinct provides police services to unincorporated areas of Norcross, Lilburn, and Duluth as well as the city of Peachtree Corners. The district is located along Interstate 85 in the southwestern portion of Gwinnett County and its boundaries extend along the County lines with Fulton County south of the city limits of Duluth to DeKalb County, along Highway 29 from DeKalb County to Beaver Run Road, and along Beaver Run Road to the city limits of Norcross.

### **District 2 – South Precinct**

The South Precinct provides police services to unincorporated areas of Tucker, Lilburn, Stone Mountain, Centerville, Snellville, and Lawrenceville. The district is located along Stone Mountain Highway (Hwy 78) in the southern portion of Gwinnett County and its boundaries are Highway 29 from DeKalb County to the city limits of Lawrenceville and along Highway 124 from the city limits of Lawrenceville back to DeKalb County.

### **District 3 – North Precinct**

The North Precinct provides police services to the cities of Buford, Sugar Hill and Rest Haven, as well as unincorporated Suwanee, Braselton and Lawrenceville areas. The district is located along Buford Highway in the northern portion of Gwinnett County and its boundaries extend along the county lines with Barrow County, Hall County, Forsyth County, and from the city limits of Suwanee along Interstate 85 to the city limits of Braselton.

### **District 4 – East Precinct**

The East Precinct provides police services to the city of Dacula, as well as unincorporated areas of Auburn, Bethlehem, Lawrenceville, and Suwanee. The district is located along Highway 316 in the eastern portion of Gwinnett County and its boundaries are Lawrenceville Suwanee Road from the city limits of Lawrenceville to the city limits of Suwanee, Interstate 85 from the city limits of Suwanee to Barrow County, and Harbins/Brooks Road from Barrow County to the city limits of Lawrenceville.

### **District 5 – Central Precinct**

The Central Precinct provides police services to the unincorporated areas of Duluth, Lawrenceville, Lilburn and Snellville. The district is located along Highway Interstate 85 in the center of Gwinnett County and its boundaries are Beaver Run Road from the city limits of Norcross to the city limits of Lilburn, Highway 29 from the city limits of Lilburn to the city limits of Lawrenceville, and Lawrenceville Suwanee Road from the city limits of Lawrenceville to the city limits of Suwanee.

### **District 6 – Bay Creek Precinct**

The Bay Creek Precinct provides police services to the incorporated City of Grayson, as well as parts of unincorporated areas of Snellville, Loganville, Lawrenceville, Dacula, and Bethlehem. The district encompasses 76 square miles. The district is located along Highway 20 in the southeastern portion of Gwinnett County and its boundaries are Harbins/Brooks Road from Barrow County to the city limits of Lawrenceville, along Hwy 124 from the city limits of Lawrenceville to DeKalb County.



## Special Operations Section

### Accident Investigation Unit (AIU)

The Accident Investigation Unit is responsible for the investigation of all fatal or life-threatening traffic crashes, which occur in Gwinnett County. The unit is also responsible for the follow-up investigation for hit-and-run crashes. Additionally, a member of A.I.U. serves as a representative on the Gwinnett County Police Safety Review Board. With the approval of A.I.U. supervision, A.I.U. may investigate or assist with the investigation of complicated or disputed traffic crashes.

### Aviation Unit

The purpose of the Aviation Unit is to provide air support to the Gwinnett County Police Department, and other County departments as needed. The Unit currently operates two helicopters. The unit provides coverage 24 hours per day, 5 days per week, with pilots on call at all other times.

### DUI Unit

This department recognizes the real and present danger presented by the DUI impaired driver to the safety and welfare of our citizens. Therefore, the department has established DUI enforcement as a high priority. Officers of this department shall make every effort to detect and apprehend impaired drivers and shall be alert at all times for indications of DUI impairment in all contacts with motorists.

The DUI Unit's primary responsibilities are that of the detection and apprehension of the DUI impaired driver. The DUI Unit is also responsible for selective traffic enforcement, traffic complaints, special details, and other special operations as deemed appropriate by the Special Operations Commander.

### K-9 Unit

Recognizing the superior scenting abilities, keen eyesight, advanced hearing capabilities, and the ability to deter crime with their sheer presence, the trained canine is a valuable asset to the law enforcement community. K-9 teams are available to the department on a 24-hour, on-call basis to track suspects and lost and/or miss-

ing persons, to locate hidden evidence of a crime, to search for suspects who are attempting to avoid arrest, to protect the public and police officers from death or injury, to prevent the escape of felons or violent offenders, and to detect the presence of a narcotic substance as well as explosive materials.

### Motor Unit

The Motor Unit is responsible for selective traffic enforcement, traffic complaints, special details, and other special operations as deemed appropriate by the Special Operations Commander.

Officers assigned to the Motor Unit conduct traffic enforcement duties as specified in the General Directives Manual. Selective enforcement is based on citizen complaints and traffic crash data.

### Special Weapons and Tactics Team/Hazardous Device Unit

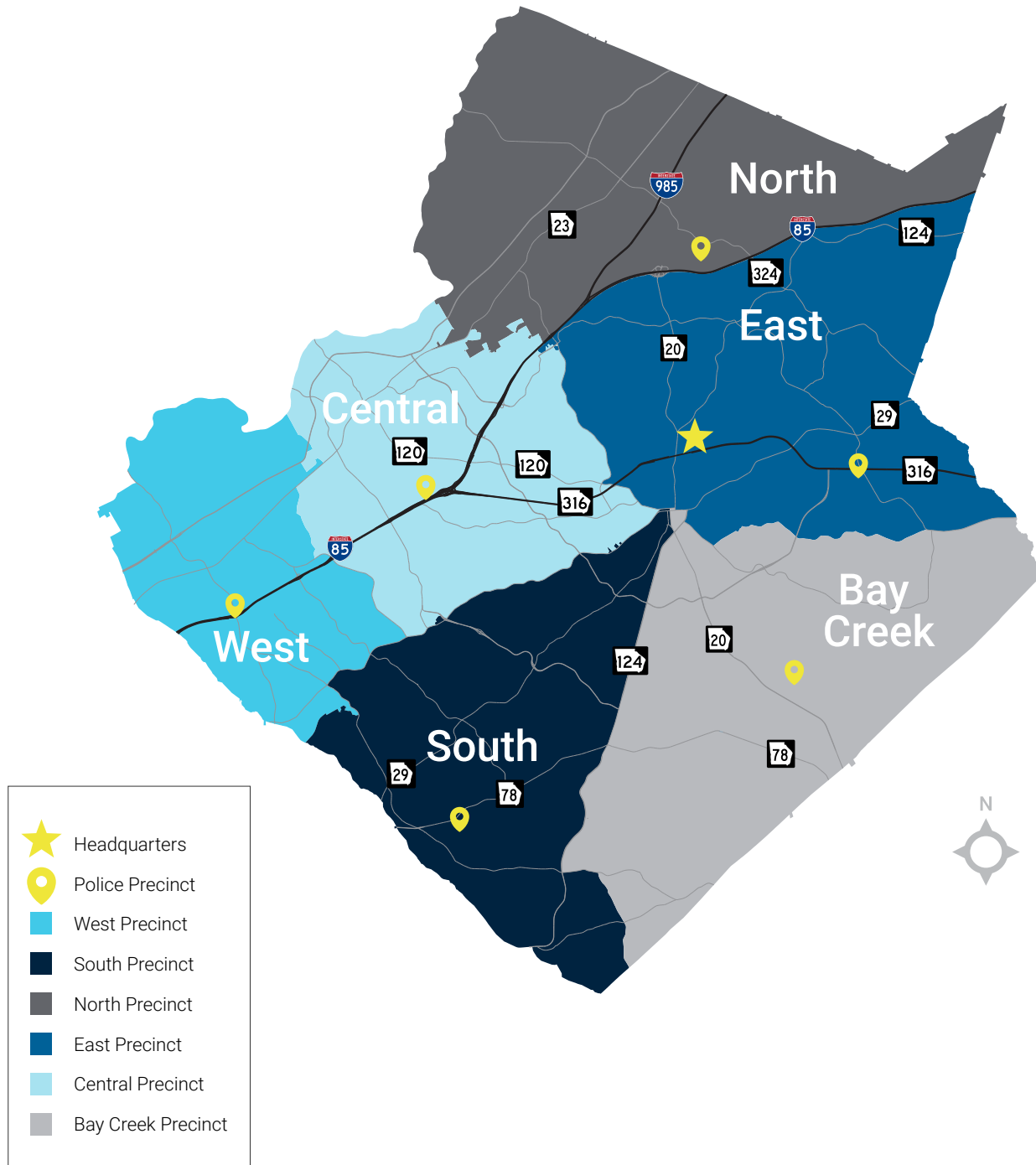
It is the intent of the Gwinnett County Police S.W.A.T. Team to provide a highly-trained and skilled tactical team as a resource for the Gwinnett County Police Department in the handling of critical incidents in order to reduce the risk of injury or loss of life to citizens, police officers and suspects.

HDU is responsible for assisting the S.W.A.T. Commander with needs including but not limited to the handling of explosive devices, suspicious packages and tactical explosive breaching.



SWAT: Call-outs and Pre-Planned Warrants	HDU Call-outs
51	59

# APPENDIX A: PRECINCT MAP



## APPENDIX B: CRIME DATA: UNIFORM STATISTICS 2011 – 2021

Calls Dispatched			Auto Accident Data			
Year	Traffic	General	Accidents	Fatalities	Injuries	DUI Arrests
2021	108,778	331,647	28,230	66	6,236	1,417
2020	122,301	341,150	25,190	49	5,211	1,512
2019	144,496	364,785	27,227	44	6,089	1,385
2018	133,216	377,414	26,451	61	5,894	1,339
2017	129,674	382,755	28,983	66	5,897	1,229
2016	143,734	414,866	31,499	47	5,863	1,531
2015	147,778	401,822	29,946	56	5,967	1,634
2014	162,705	405,580	25,675	44	4,866	907
2013	184,649	419,387	20,791	42	4,707	1,178
2012	205,281	441,408	22,350	37	4,828	2,471
2011	207,904	451,551	19,271	45	5,143	2,808



## APPENDIX C: PART 1 CRIMES/STATISTICAL DATA 2011 – 2021

Crime	2011	2012	2013	2014	2015	2016	2017	2018	2019	2020	2021
Murder	25	34	25	29	26	29	28	36	30	49	48
Rape	157	173	152	155	128	155	177	194	172	145	190
Robbery	653	683	703	630	764	790	700	625	584	453	427
Aggravated Assault	579	574	584	557	705	753	718	799	893	1,007	1,011
Aggravated Battery	47	67	57	56	63	81	69	64	74	76	67
<b>Total</b>	<b>1,461</b>	<b>1,531</b>	<b>1,521</b>	<b>1,427</b>	<b>1,686</b>	<b>1,808</b>	<b>1,692</b>	<b>1,718</b>	<b>1,753</b>	<b>1,730</b>	<b>1,743</b>
Burglary	5,161	4,163	3,724	3,319	2,972	3,218	2,803	2,497	2,175	1,432	1,292
Theft	8,201	7,968	8,603	8,660	8,463	8,935	8,968	9,185	9,705	8,159	8,935
Auto Theft	1,240	1,125	1,196	1,250	1,372	1,238	1,464	1,576	1,507	1,310	1,169
Entering Auto	3,080	2,932	3,468	3,280	3,491	3,753	3,990	4,040	4,065	3,019	2,445
Arson	98	70	60	77	43	59	42	27	28	45	35
<b>Total</b>	<b>17,780</b>	<b>16,258</b>	<b>17,051</b>	<b>16,586</b>	<b>16,341</b>	<b>17,203</b>	<b>17,267</b>	<b>17,325</b>	<b>17,480</b>	<b>13,965</b>	<b>13,876</b>
Service Population	700,541	713,272	729,847	745,962	761,172	770,784	783,464	791,997	805,421	810,907	826,685
Authorized Sworn Positions	758	758	758	758	754	783	783	849	877	906	930
Officers/1,000 Population	1.08	1.06	1.04	1.02	0.99	1.02	1.00	1.07	1.09	1.12	1.12
Violent Crimes/100,000	209	215	208	191	222	235	216	217	218	213	211

## APPENDIX D: PERSONNEL ALLOCATIONS 2011 – 2021

Authorized Personnel Strength				Turnover		Hired	
Year	Sworn	Non-Sworn	Total	Sworn	Non-Sworn	Sworn	Non-Sworn
2021	930	296	1,226	197	62	95	49
2020	906	287	1,193	136	53	156	60
2019	877	275	1,152	95	34	134	52
2018	849	280	1,129	80	52	124	40
2017	783	280	1,063	73	36	100	69
2016	783	321	1,104	97	51	84	83
2015	753	314	1,067	98	64	106	88
2014	758	308	1,066	81	44	71	58
2013	758	307	1,065	79	27	51	46
2012	758	307	1,065	55	46	57	39
2011	758	307	1,065	52	60	28	29

# Gwinnett

COUNTY GOVERNMENT

---

GWINNETT COUNTY  
Police Department  
75 Langley Drive | Lawrenceville, Georgia  
**GwinnettPolice.com**

Published Winter 2023