



Wet Chemical Fire Suppression System

Business Name: _____
 Address: _____ Bldg/Suite #: _____
 City: _____ Zip Code: _____
 COMFIRE#: _____
 Fire Protection Company: _____
 Contact Person: _____
 Phone Number: _____
 Email: _____
 System Model: _____

Gwinnett Fire Plan Review

All information shall be included on plans. Fill out top and bottom. Include any additional conditions or comments on attached sheet.

Plan Review:

Yes No N/A

- Plans and Pipe Layout
- Elevation View (front/side)
- Component Specifications
- Agent Flow Calculations

System Requirements:

Hazard Protection

Yes No N/A

Deep Fat Fryer
 Surface Width _____
 Surface Length _____
 Drip Pan Length _____
 Nozzle Type _____
 Nozzle Flows _____
 Nozzle Number _____
 Total Hazard Nozzle Flows _____

Yes No N/A

Charbroiler (Natural, Class A)
 Surface Width _____
 Surface Length _____
 Nozzle Type _____
 Nozzle Flows _____
 Nozzle Number _____
 Total Hazard Nozzle Flows _____

Yes No N/A

Griddle
 Surface Width _____
 Surface Length _____
 Nozzle Type _____
 Nozzle Flows _____
 Nozzle Number _____
 Total Hazard Nozzle Flows _____

Yes No N/A

Upright Broiler
 Surface Width _____
 Surface Length _____
 Rack/top of Broiler Ht. _____
 Drip Pan/Rack Ht. _____
 Nozzle Type _____
 Nozzle Flows _____
 Nozzle Number _____
 Total Hazard Nozzle Flows _____

Yes No N/A

Range
 Surface Width _____
 Surface length _____
 Nozzle Type _____
 Nozzle Flows _____
 Nozzle Number _____
 Total Hazard Nozzle Flows _____

Yes No N/A

Chain Broiler (Closed Top)
 Surface Width _____
 Surface Length _____
 Rack/top of Broiler Ht. _____
 Drip Pan/Rack Ht. _____
 Nozzle Type _____
 Nozzle Flows _____
 Nozzle Number _____
 Total Hazard Nozzle Flows _____

Yes No N/A

Radiant Charbroiler

Surface Width _____

Surface Length _____

Nozzle Type _____

Nozzle Flows _____

Nozzle Number _____

Total Hazard Nozzle Flows _____

Yes No N/A

Range Charbroiler (Synthetic Rock)

Surface Width _____

Surface Length _____

Nozzle Type _____

Nozzle Flows _____

Nozzle Number _____

Total Hazard Nozzle Flows _____

Yes No N/A

Chain Broiler (Open Top)

Surface Width _____

Surface Length _____

Rack/top of Broiler Ht. _____

Drip Pan/Rack Ht. _____

Nozzle Type _____

Nozzle Flows _____

Nozzle Number _____

Total Hazard Nozzle Flows _____

Yes No N/A

Wok

Surface Diameter _____

Depth _____

Nozzle Type _____

Nozzle Flows _____

Nozzle Number _____

Total Hazard Nozzle Flows _____

Exhaust System Protection

Yes No N/A

Duct

Duct Length _____

Duct Width _____

Duct Diameter _____

Nozzle Flows _____

Nozzle Number _____

Total Hazard Nozzle Flows _____

Yes No N/A

Plenum

Plenum Length _____

Plenum Width _____

Duct Diameter _____

Nozzle Flows _____

Nozzle Number _____

Total Hazard Nozzle Flows _____

Design Parameters

Yes No N/A

Number of Flow Points _____

Number of Cylinder (Flows/Cylinder) _____

Flow Point Balance _____

Special Equipment

Yes No N/A

Fire Alarm Interconnection

Non-Standard Application

Max. Temp. _____ ° F

Min. Temp. _____ ° F

Exhaust Fan Shutdown

Fire Extinguisher

Rating _____

Placement _____

System Components

Yes No N/A

Piping

Type _____

Length of Main supply _____

Length of Branch Supply _____

Trees/Ells _____

Yes No N/A

Control Head

Mechanical

Electrical (Model: _____)

Fuel Power Supply Shut-Off

Solenoid/Valve Location

Yes No N/A

Cylinder Location

Outside Hazard Area

Piping Limitations

Linear

_____ Ft. Max.

_____ Ft. Min.

Equivalent

_____ Ft. Max.

_____ Ft. Min.

Yes No N/A

Detector

Mechanical

Temp _____ ° F

Electrical

Temp _____ ° F

Placement _____

Mounting _____

Yes No N/A

Fuel Service

Pipe Size _____

Yes No N/A

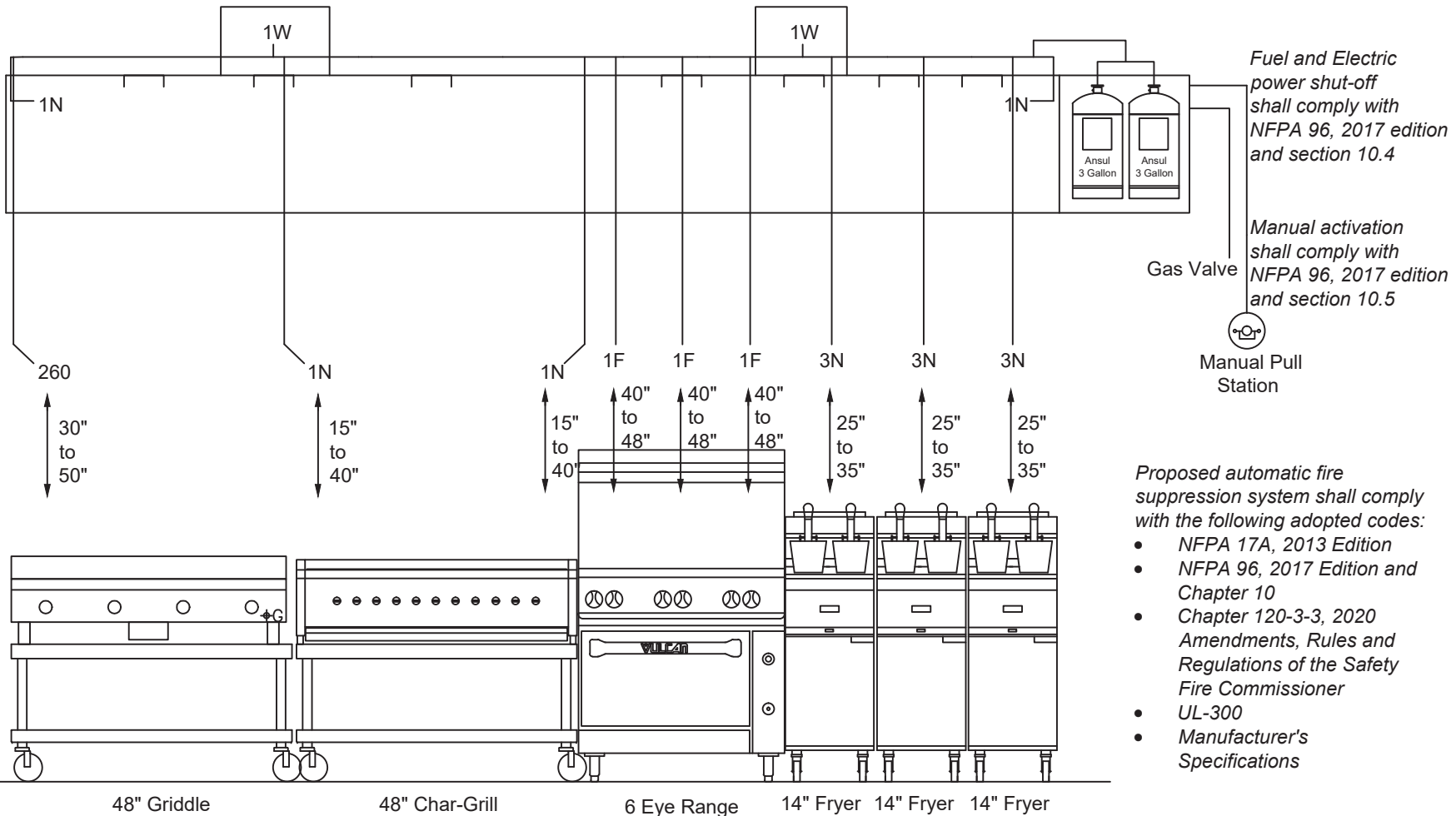
Remote Pull Station
Mechanical
Electrical
Placement (Exit)
Mounting Height
Operating Instructions Posting

Additional Comments: _____

This worksheet shall be used in conjunction with the National Fire Protection Association (NFPA 10, 17, and 96), International Fire Code, and referenced standards. Conditions not specifically covered by this worksheet shall comply with nationally recognized standards or guidelines as approved by the Gwinnett County Fire Plan Review

EXAMPLE SUPPRESSION PLANS AND PIPE LAYOUT

15ft11in Hood with (2)16" Diam Duct



Hood and duct work to be submitted separately by others to the AHJ for review and approval.

LINE LEGEND	
[]	LINK BRACKET
—	PIPE 3/8"